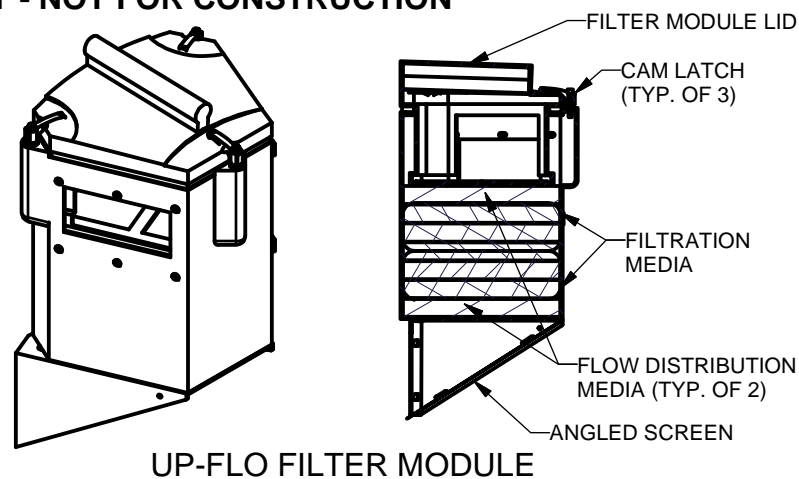
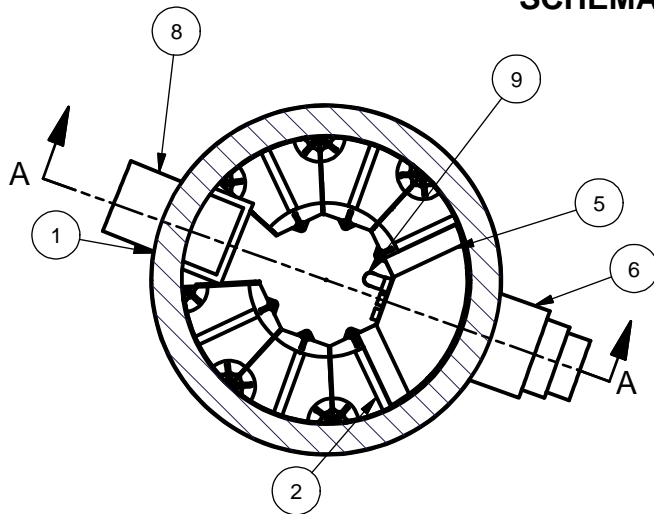


SCHEMATIC ONLY - NOT FOR CONSTRUCTION



UP-FLO FILTER MODULE

EQUIPMENT PERFORMANCE

The stormwater filtration system shall adhere to the parameters listed below:

Minimum Performance Criteria: 80% removal of Sil-Co-Sil 106 at the peak treatment flow.

Peak Treatment Flow: SEE NOTE 1

Minimum Bypass Capacity: 1527 gpm (96.20 l/s) SEE NOTE 2

Minimum Sediment Storage Capacity: 16.6 cu. ft. (0.47 cu. m.)

Minimum Oil Storage Capacity: 50 gal. (189 liters)

OUTLET PIPE STUB SIZE INFORMATION

Outside Diameter: 10.5", 12.5" or 15.3" OD

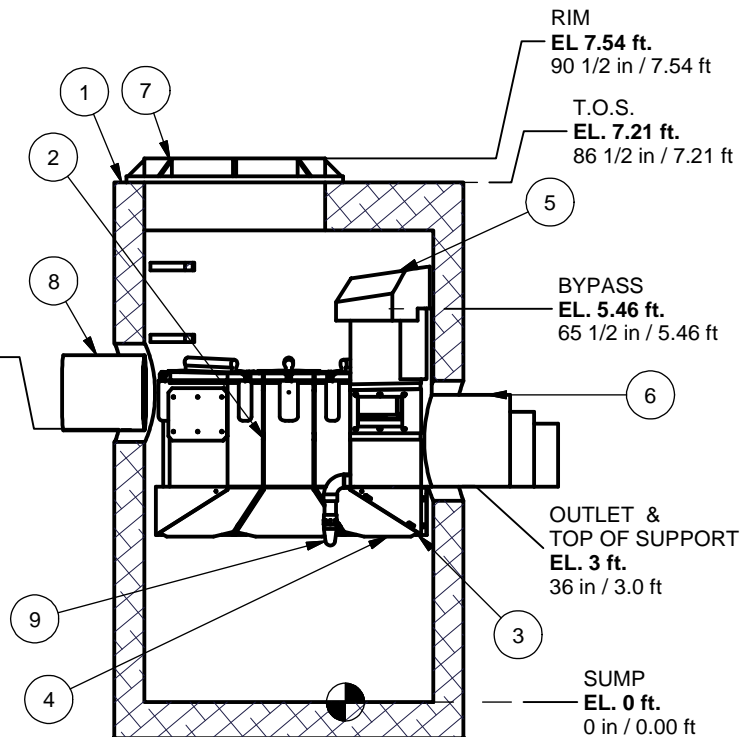
Concrete Penetration: Pipe Boot (by Hydro)

Outlet Connection: Fernco-type coupling (BY OTHERS)

INLET: ORIENTATION & SIZE WILL BE SITE SPECIFIC (BY OTHERS)

INLET
EL 3.79 ft.
45 1/2 in / 3.79 ft

Parts List			
ITEM	QTY	SIZE	DESCRIPTION
1	1	48 in	CONCRETE MANHOLE
2	6		FILTER MODULE
3	1		SUPPORT
4	1		ANGLED SCREEN
5	1		SIPHONIC BYPASS AND FLOATABLES BAFFLE
6	1		OUTLET MODULE AND PIPE STUB
7	1	30 in	FRAME AND COVER
8	1	12 in	INLET PIPE
9	1		DRAINDOWN FILTER



SECTION A-A

Notes

1. Peak Treatment Flow Rate is Media Specific
CPZ = 25 gpm/module
CPS = 20 gpm/module
Sand = 23 gpm/module
Perlite = 28 gpm/module

2. Bypass Capacity will vary depending on TWL
Minimum Bypass Capacity
TWL = 5.84 ft.

REVISION HISTORY

REV	BY	DATE	DESCRIPTION
	EPL	02/22/06	FIRST ISSUE
A	EPL	6/25/06	PRODUCT INFORMATION HATCHING
B	RC	12/7/07	FILTER MODULE
C	RC	1/14/08	STEPS & OFFSET MH COVER

Date 1/14/2008 Scale 3/8"=1'-0"

Drawn RC Checked Approved

Title

4-FT DIAMETER
UP-FLO FILTER

GENERAL ARRANGEMENT



94 Hutchins Drive
Portland, Maine 04102
Tel: (207) 756-6200
Fax: (207) 756-6212
Email: hiltech@hil-tech.com